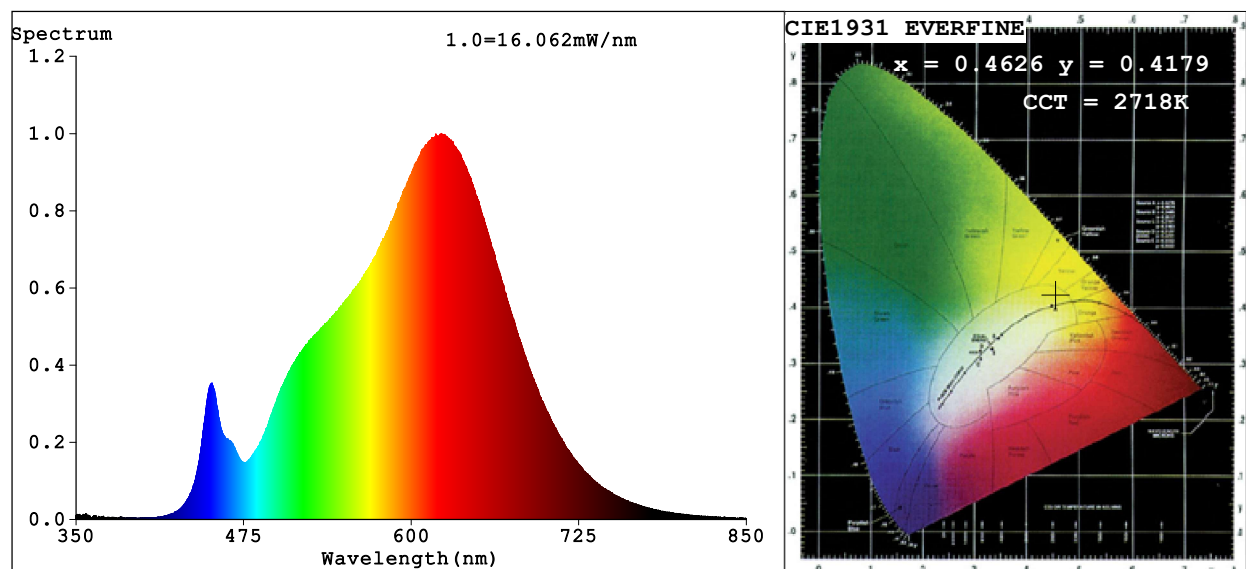


## Spectrum Test Report



### Color Parameters:

Chromaticity Coordinate:  $x=0.4626$   $y=0.4179$   $u'=0.2610$   $v'=0.5305$

CCT=2718K (Duv=0.0024) Dominant WL:Ld =583.4nm Purity=64.3%

Ratio:R=26.2% G=71.5% B=2.3%; Peak WL:Lp=622.7nm FWHM=143.8nm

Render Index:Ra=92.5 CRI=89.5 TM30:Rf=92 Rg=98

R1 =92 R2 =96 R3 =98 R4 =94 R5 =92 R6 =96 R7 =92

R8 =80 R9 =54 R10=89 R11=96 R12=82 R13=93 R14=98 R15=87

### Photo Parameters:

Flux = 734.0 lm Eff. : 65.52 lm/W Fe = 2.520 W

### Electrical parameters:

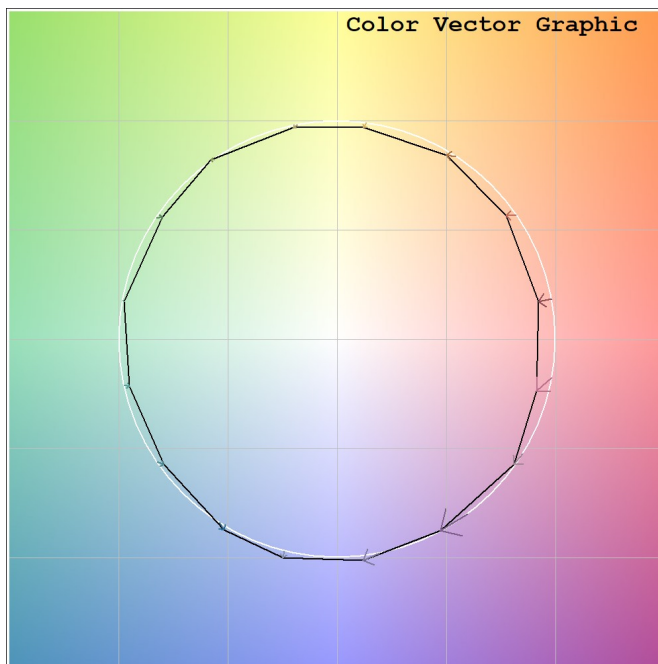
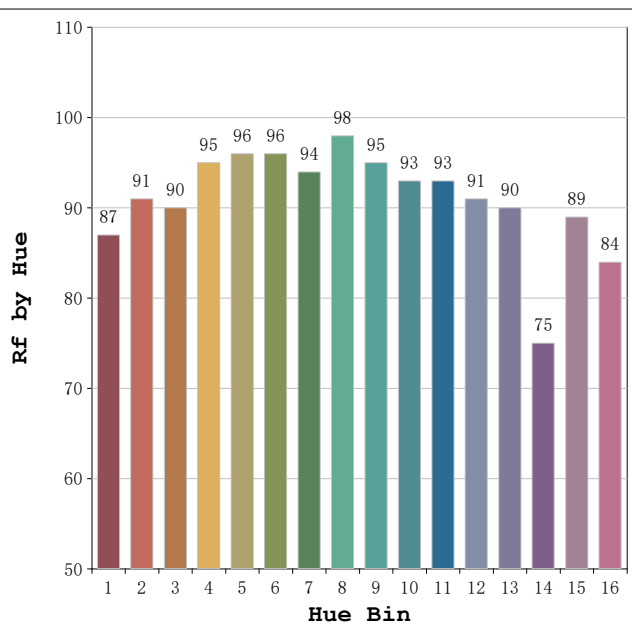
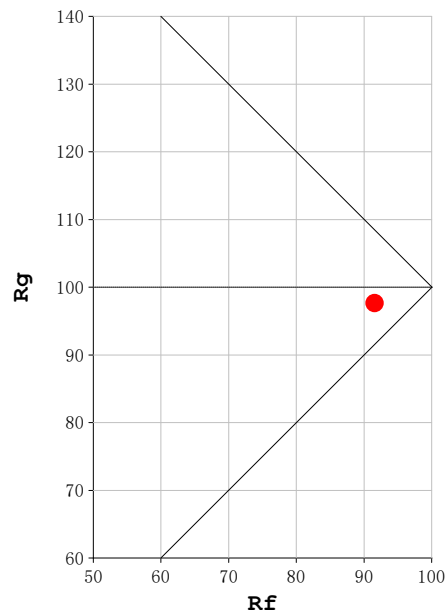
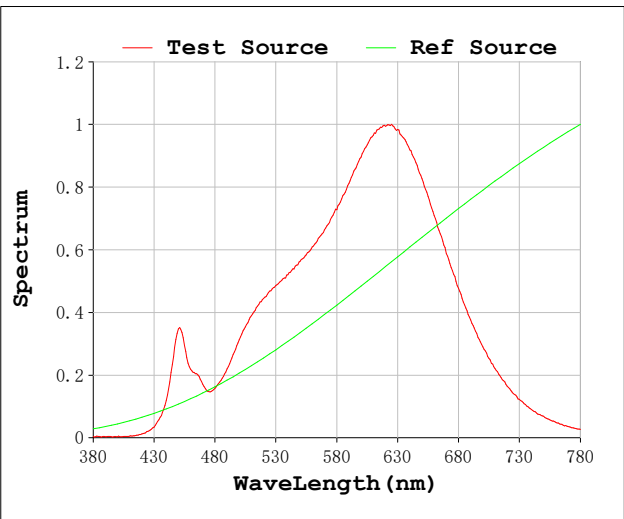
V = 230.12 V I = 0.05184 A P = 11.20 W PF = 0.9391

Status: Integral T = 1776 ms Ip = 49646 (76%)

Model:Focalis Axis 11 W  
Tester:Sergio Carneros  
Temperature:20Deg  
Manufacturer:Luz Negra

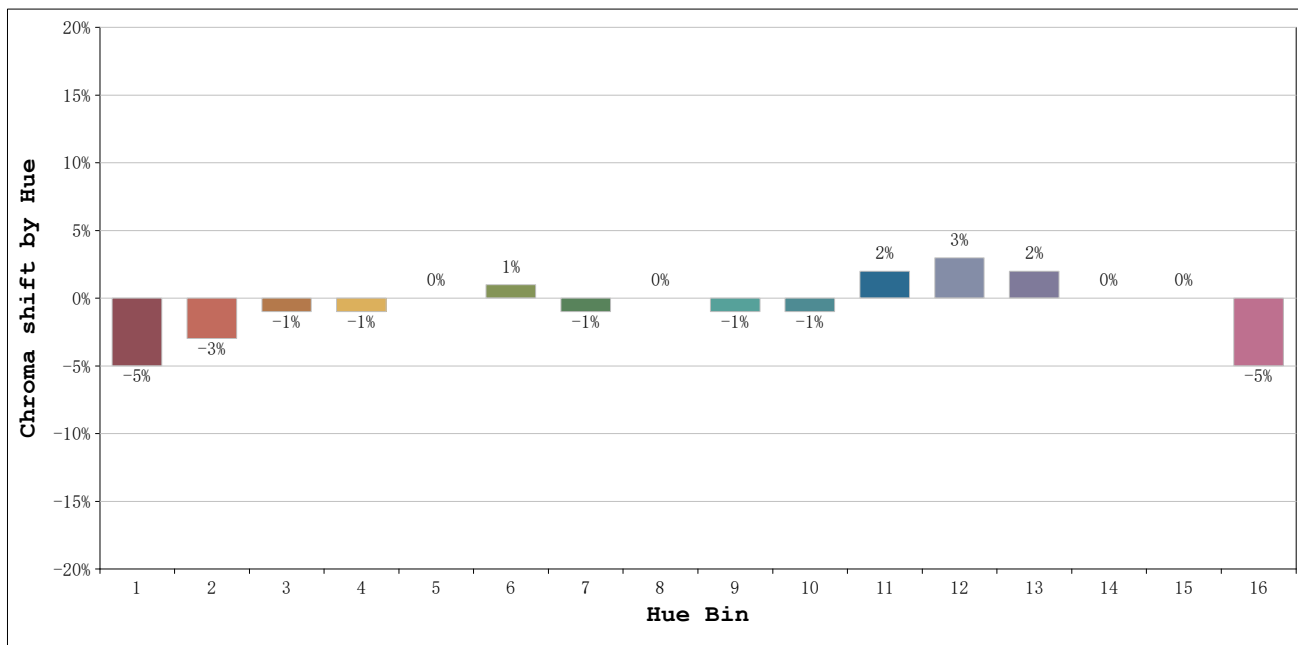
Number:2700K 25°  
Date:2026-03-20 13:37:42  
Humidity:50%  
Remarks:1 unidad ref.blanco

**Rf: 92**      **CCT: 2718 K**      **u': 0.2610**  
**Rg: 98**      **Duv: 0.0024**      **v': 0.5305**



Model:Focalis Axis 11 W  
 Tester:Sergio Carneros  
 Temperature:20Deg  
 Manufacturer:Luz Negra

Number:2700K 25°  
 Date:2026-03-20 13:37:42  
 Humidity:50%  
 Remarks:1 unidad ref.blanco



			Graphic shift(%)	
Hue Bin	Hue Angle	Rf	Chroma	Hue
1	0.0° - 22.5°	87	-5	0
2	22.5° - 45.0°	91	-3	2
3	45.0° - 67.5°	90	-1	4
4	67.5° - 90.0°	95	-1	1
5	90.0° - 112.5°	96	0	2
6	112.5° - 135.0°	96	1	2
7	135.0° - 157.5°	94	-1	-1
8	157.5° - 180.0°	98	0	0
9	180.0° - 202.5°	95	-1	1
10	202.5° - 225.0°	93	-1	3
11	225.0° - 247.5°	93	2	4
12	247.5° - 270.0°	91	3	0
13	270.0° - 292.5°	90	2	-7
14	292.5° - 315.0°	75	0	-14
15	315.0° - 337.5°	89	0	-5
16	337.5° - 360.0°	84	-5	-6

Model:Focalis Axis 11 W  
 Tester:Sergio Carneros  
 Temperature:20Deg  
 Manufacturer:Luz Negra

Number:2700K 25°  
 Date:2026-03-20 13:37:42  
 Humidity:50%  
 Remarks:1 unidad ref.blanco